A high-angle, top-down view of a person swimming in a pool. The water is a deep blue with intricate, shimmering patterns of light reflecting off the surface. The swimmer is positioned on the left side of the frame, moving towards the right. Their arms are extended forward, and their legs are slightly apart, creating a splash of white water behind them. The overall mood is serene and elegant.

WHEN QUALITY  
MEETS ETERNITY —

**&POOLS**



# WHEN QUALITY MEETS ETERNITY

For more than 30 years, we've been transforming stainless steel into functional works of art. &POOLS pools are not just water surfaces – they are spaces for relaxation, memorable moments, and timeless elegance. Each of our pools is a testament to the power of craftsmanship, premium materials, and a refined sense of design – resulting in something that lasts for generations.

We manufacture in the heart of Europe, with a level of care you'll notice in every detail. Whether for private homes, wellness centers, or public facilities, &POOLS stainless steel pools are a symbol of enduring quality.



MADE IN  
EUROPE



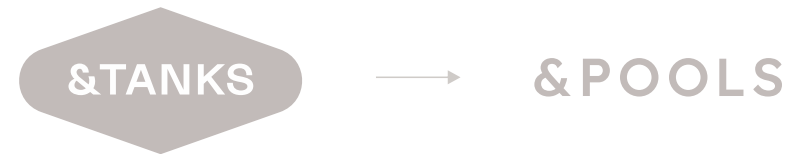
OVER 30 YEARS  
OF EXPERIENCE



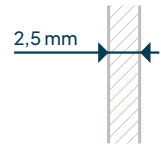
## ABOUT THE COMPANY

&POOLS was established as a specialized division of &TANKS s.r.o., one of the leading manufacturers of stainless steel products in Central Europe. Our history dates back to 1991, when we began producing stainless steel tanks for winemakers and the beverage industry. Thanks to precise workmanship, reliability, and long product lifespan, we've built a strong reputation throughout Europe.

As demand grew for high-quality, aesthetically clean stainless steel pools, we naturally extended our know-how into this segment. That's how the &POOLS brand was born – combining decades of experience with innovation and a focus on design. Every &POOLS product is the result of craftsmanship, modern technology, and meticulous attention to detail.



# WHY CHOOSE &POOLS?



## ROBUST CONSTRUCTION

Walls with a thickness of 2.5 mm and a 2 mm thick bottom ensure exceptional strength and long-term durability.



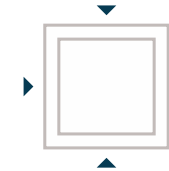
## INTEGRATED INSULATION

Our solution combines structural strength with thermal efficiency – no additional perimeter insulation needed.



## 10-YEAR WARRANTY ON STRUCTURAL ELEMENTS

We stand behind our craftsmanship with an extended 10-year warranty on all core structural components of &POOLS pools.



## ENHANCED WALL SUPPORT

Reinforced side walls provide superior stability and resistance to deformation.



## ALL-STAINLESS COMPONENTS

Every element – from channels and stairs to benches – is made entirely of stainless steel, with no compromise on quality or aesthetics.

## OUR OFFER



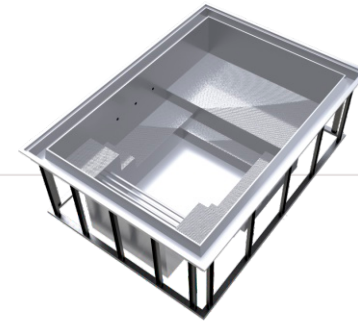
### &POOLS SKIMMER

A reliable and proven stainless steel pool type.  
Water is drawn into a surface skimmer and pumped  
into a filtration system. Simple and efficient.



### &POOLS OVERFLOW

A premium solution with a luxurious appearance.  
Water reaches the top edge and flows into an  
overflow channel around the perimeter, ensuring  
effective cleaning and creating a visually striking  
effect.



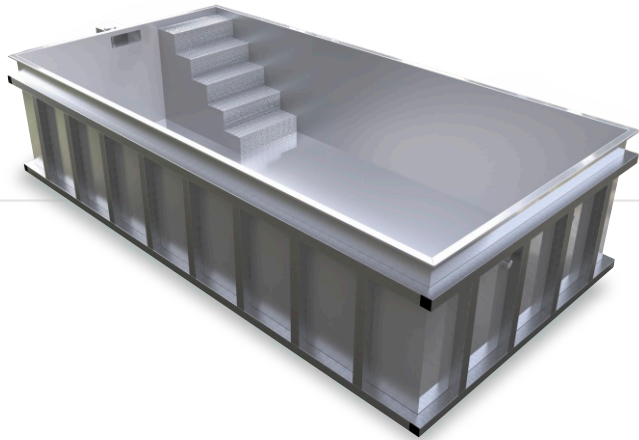
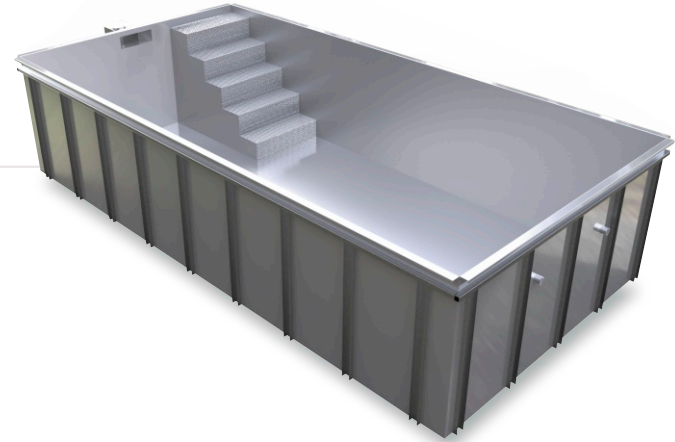
### &POOLS MINI

A compact solution ideal for limited spaces –  
terraces, small gardens, rooftop installations,  
or as a cooling plunge pool. Perfect for modern  
urban environments where every meter counts.

# INSTALLATION OPTIONS

## IN-GROUND INSTALLATION

The most common installation method, where the pool is fully embedded into the ground. Typically placed on a concrete foundation and surrounded by concrete.



## ABOVE-GROUND INSTALLATION

Ideal for terraces, sloped terrains, or modern architectural concepts where one to three pool walls are elevated above the surrounding ground level.

# SIZES

&POOLS standard sizes:

4x3x1,4m

5x3x1,4m

6x3x1,4m

7x3x1,4m

8x3x1,4m

Custom dimensions are available on request – especially for public or architecturally unique projects.

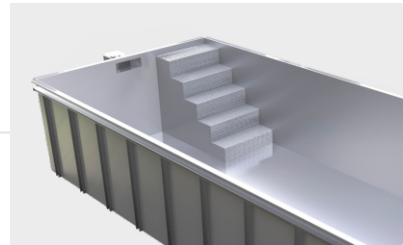
## &POOLS ACCESSORIES

Perfect your pool with a wide range of accessories – from entry steps to integrated benches and other functional or aesthetic features.

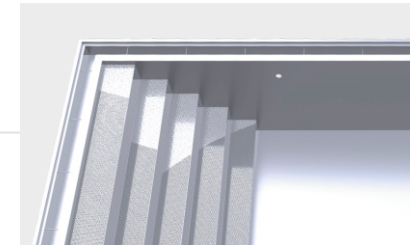
### STAIRS

A key design element that influences both the look and comfort of your pool.  
Choose from:

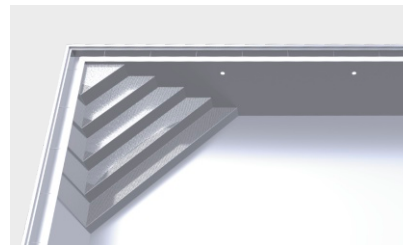
All steps are equipped with anti-slip surface (embossing). Upon request, anti-slip features can be applied to other parts as well.



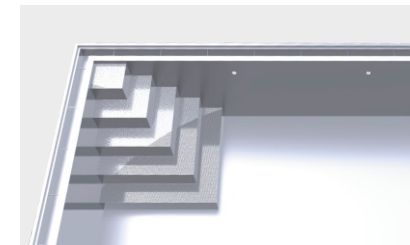
Classic corner steps



Full-width steps



Diagonal corner steps

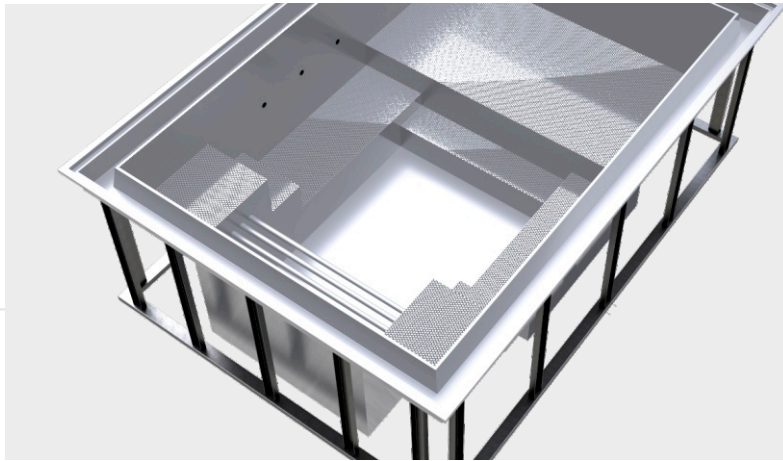


Square corner steps



## BENCHES

Integrated underwater benches provide a relaxing zone directly in the pool. They can also conceal an underwater roller cover system – an elegant and functional solution.



## ADDITIONAL FEATURES

Counter-current units, LED lighting, underwater roller covers, grab rails, floor drains, two types of skimmers (standard and U-shaped), and more – customized to meet your needs.

We work exclusively with trusted suppliers and use only components that meet the highest quality standards. Every detail is carefully thought out to ensure the whole system works flawlessly and lasts for years to come.





WHEN QUALITY MEETS ETERNITY

**&POOLS**

Tel. +420 724 381 706  
E-mail [info@andpools.eu](mailto:info@andpools.eu)

&TANKS s.r.o.  
[www.andpools.eu](http://www.andpools.eu)